



UniFi® | SWITCH 8

Fully Managed Gigabit Switches

Models: US-8, US-8-60W

Non-Blocking Throughput Switching Performance

Gigabit Ethernet RJ45 Ports

Robust Performance for Enterprise Networks



UniFi® | SWITCH

Overview

Build and expand your network with Ubiquiti Networks® UniFi® Switch, part of the UniFi line of products.

The new 8-port models feature Gigabit Ethernet ports in a compact form factor. The switches are fully manageable, delivering robust performance and intelligent switching for your networks.

Switching Performance

The UniFi Switch offers the forwarding capacity to simultaneously process traffic on all ports at line rate without any packet loss.

For its total, non-blocking throughput, each UniFi Switch supports up to 8 Gbps with a switching capacity of 16 Gbps.

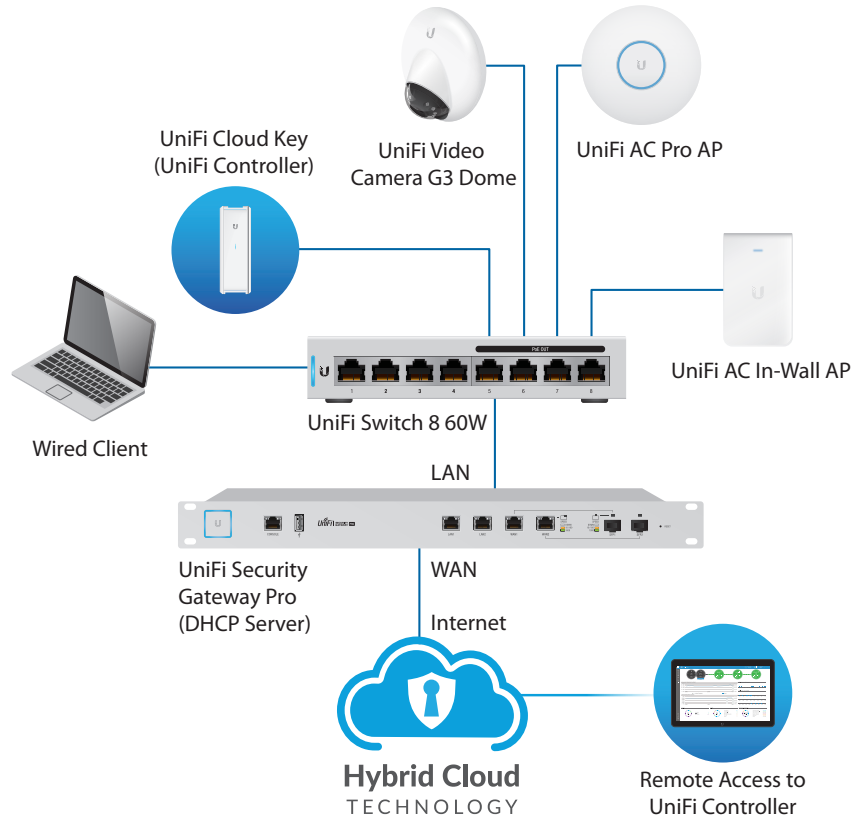
PoE

The US-8 can be powered by 802.3af/at, 48V passive PoE, or the included power adapter. When the US-8 is powered by 802.3at PoE or the included power supply, port 8 supports 48V (2-pair) PoE passthrough to deliver up to 12W of power.

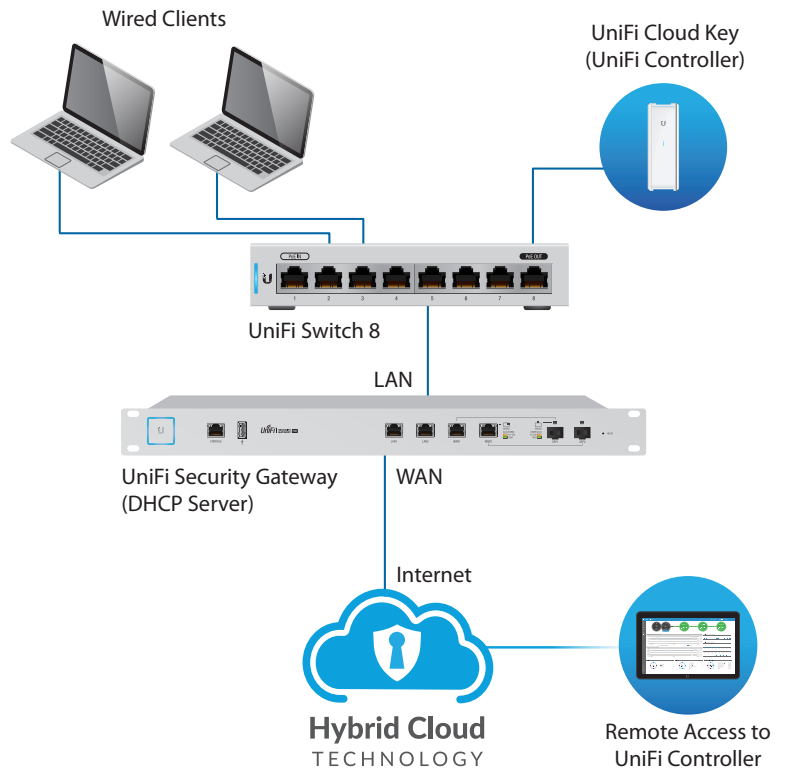
The following table displays the PoE passthrough options for the US-8:

Power Input	PoE Passthrough
802.3af In	No PoE Out
802.3at In	802.3af Out
Power Supply (Included)	48V Passive Out

The US-8-60W is powered by its included power adapter. It has four auto-sensing PoE ports delivering up to 15.4W of power per port.



US-8-60W Sample Network Diagram



US-8 Sample Network Diagram

UniFi Controller

Designed for convenient management, the UniFi Controller software allows admins to configure and monitor the UniFi Switch and other UniFi devices using a graphical user interface. You can download it from www.ubnt.com at no extra charge – there is no separate software, licensing, or support fee.

Multi-Site Management

A single instance of the UniFi Controller running in the cloud can manage multiple UniFi sites within a centralized interface. Each site is logically separated and has its own network monitoring, configuration, maps, statistics, and admin accounts.

Switch Configuration

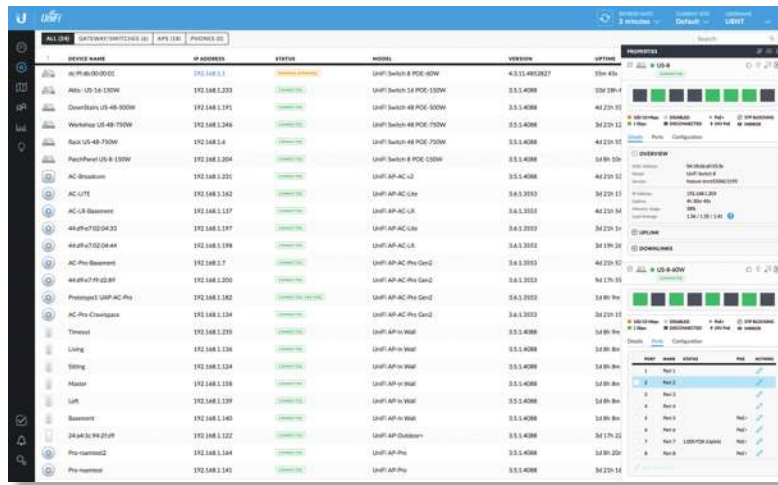
You can access any managed UniFi Switch through the UniFi Controller to configure a variety of features:

- Operation mode (switching, mirroring, or aggregate) per port
- Network/VLAN configuration
- Jumbo frame and flow control services
- Network settings
- Storm control setting per port
- Spanning tree configuration
- 802.1x control and RADIUS VLAN
- Debug terminal option for command-line interface

Switch Port Status

You can also view status information for each port:

- Connection speed and duplex mode
- TX/RX data rates
- Network/VLAN setting



Device Configuration

The *Devices* screen displays the UniFi devices discovered by the UniFi Controller. You can access each managed device for device details and configuration.



Statistics

The *Switch Statistics* screen displays a graphical overview of all LAN throughput for each port on the selected switch. Under the same pane of glass, it also shows LAN, WLAN, and Internet traffic, including the breakdown of protocols being used (requires a UniFi Security Gateway).

SWITCH	NAME	PORT	MODE	NETWORK/CLASS	LINK STATUS	SPEED	Tx	Rx	Tx RATE	Rx RATE	ACTIVITY	ACTION
1	US-0100-Loc	Port 1	Switching	All	LINK UP	1000000	4391320	207198	4391320	207198	100%	🧹 CLEAN COUNTERS
1	US-0100-Loc	Port 2	Switching	All	LINK UP	1000000	4391320	207198	4391320	207198	100%	🧹 CLEAN COUNTERS
1	US-0100-Loc	Port 3	Switching	All	LINK UP	1000000	4391320	207198	4391320	207198	100%	🧹 CLEAN COUNTERS
1	US-0100-Loc	Port 4	Switching	All	LINK UP	1000000	4391320	207198	4391320	207198	100%	🧹 CLEAN COUNTERS
1	US-0100-Loc	Port 5	Switching	All	LINK UP	1000000	4391320	207198	4391320	207198	100%	🧹 CLEAN COUNTERS
1	US-0100-Loc	Port 6	Switching	All	LINK UP	1000000	4391320	207198	4391320	207198	100%	🧹 CLEAN COUNTERS
1	US-0100-Loc	Port 7	Switching	All	LINK UP	1000000	4391320	207198	4391320	207198	100%	🧹 CLEAN COUNTERS
1	US-0100-Loc	Port 8	Switching	All	LINK UP	1000000	4391320	207198	4391320	207198	100%	🧹 CLEAN COUNTERS
1	US-0100-Loc	Port 9	Switching	All	LINK UP	1000000	4391320	207198	4391320	207198	100%	🧹 CLEAN COUNTERS
1	US-0100-Loc	Port 10	Switching	All	LINK UP	1000000	4391320	207198	4391320	207198	100%	🧹 CLEAN COUNTERS
1	US-0100-Loc	Port 11	Switching	All	LINK UP	1000000	4391320	207198	4391320	207198	100%	🧹 CLEAN COUNTERS
1	US-0100-Loc	Port 12	Switching	All	LINK UP	1000000	4391320	207198	4391320	207198	100%	🧹 CLEAN COUNTERS
1	US-0100-Loc	Port 13	Switching	All	LINK UP	1000000	4391320	207198	4391320	207198	100%	🧹 CLEAN COUNTERS
1	US-0100-Loc	Port 14	Switching	All	LINK UP	1000000	4391320	207198	4391320	207198	100%	🧹 CLEAN COUNTERS
1	US-0100-Loc	Port 15	Switching	All	LINK UP	1000000	4391320	207198	4391320	207198	100%	🧹 CLEAN COUNTERS
1	US-0100-Loc	Port 16	Switching	All	LINK UP	1000000	4391320	207198	4391320	207198	100%	🧹 CLEAN COUNTERS
1	US-0100-Loc	Port 17	Switching	All	LINK UP	1000000	4391320	207198	4391320	207198	100%	🧹 CLEAN COUNTERS
1	US-0100-Loc	Port 18	Switching	All	LINK UP	1000000	4391320	207198	4391320	207198	100%	🧹 CLEAN COUNTERS
1	US-0100-Loc	Port 19	Switching	All	LINK UP	1000000	4391320	207198	4391320	207198	100%	🧹 CLEAN COUNTERS
1	US-0100-Loc	Port 20	Switching	All	LINK UP	1000000	4391320	207198	4391320	207198	100%	🧹 CLEAN COUNTERS
1	US-0100-Loc	Port 21	Switching	All	LINK UP	1000000	4391320	207198	4391320	207198	100%	🧹 CLEAN COUNTERS
1	US-0100-Loc	Port 22	Switching	All	LINK UP	1000000	4391320	207198	4391320	207198	100%	🧹 CLEAN COUNTERS
1	US-0100-Loc	Port 23	Switching	All	LINK UP	1000000	4391320	207198	4391320	207198	100%	🧹 CLEAN COUNTERS
1	US-0100-Loc	Port 24	Switching	All	LINK UP	1000000	4391320	207198	4391320	207198	100%	🧹 CLEAN COUNTERS
1	US-0100-Loc	Port 25	Switching	All	LINK UP	1000000	4391320	207198	4391320	207198	100%	🧹 CLEAN COUNTERS
1	US-0100-Loc	Port 26	Switching	All	LINK UP	1000000	4391320	207198	4391320	207198	100%	🧹 CLEAN COUNTERS
1	US-0100-Loc	Port 27	Switching	All	LINK UP	1000000	4391320	207198	4391320	207198	100%	🧹 CLEAN COUNTERS
1	US-0100-Loc	Port 28	Switching	All	LINK UP	1000000	4391320	207198	4391320	207198	100%	🧹 CLEAN COUNTERS
1	US-0100-Loc	Port 29	Switching	All	LINK UP	1000000	4391320	207198	4391320	207198	100%	🧹 CLEAN COUNTERS
1	US-0100-Loc	Port 30	Switching	All	LINK UP	1000000	4391320	207198	4391320	207198	100%	🧹 CLEAN COUNTERS

Insights

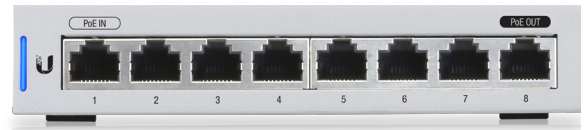
On the *Insights* screen, the *Switch Stats* filter displays information about the status, ports, PoE, and traffic activity of the UniFi Switches.

Models

UniFi® | SWITCH 8

Model: US-8

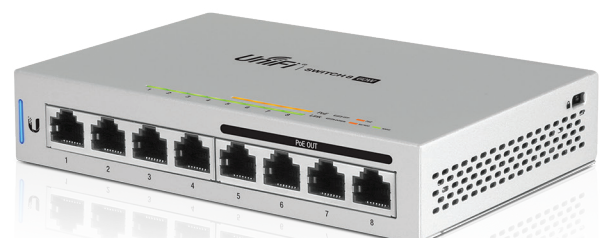
- (8) Gigabit RJ45 Ports
- (1) PoE Passthrough Port
- Non-Blocking Throughput: 8 Gbps
- Switching Capacity: 16 Gbps
- Forwarding Rate: 11.9 Mpps
- Maximum Power Consumption: 12W
- PoE or DC Input Option
- Available in Single-Pack and 5-Pack
(Power Supply Not Included with 5-Pack)



UniFi® | SWITCH 8 60W

Model: US-8-60W

- (8) Gigabit RJ45 Ports
- (4) Auto-Sensing IEEE 802.3af PoE Ports
- Non-Blocking Throughput: 8 Gbps
- Switching Capacity: 16 Gbps
- Forwarding Rate: 11.9 Mpps
- Maximum Power Consumption: 12W
- Available in Single-Pack and 5-Pack



Mounting Versatility

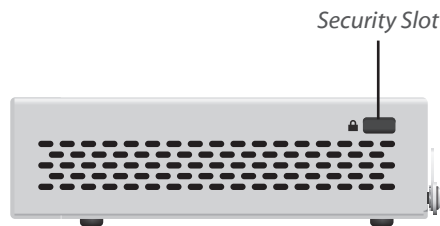
The UniFi Switch offers the following mounting options:

- **Wall Mounting** You can attach the UniFi Switch to a vertical surface using the included wall-mounting hardware. You can position the switch so that the ports face in any of four directions: up, down, left, or right.
- **Desktop Placement** You can place the UniFi Switch on a level, horizontal surface such as a table or desktop. The built-in, non-skid rubber feet help hold the switch firmly in place.



Security Slot

To help deter theft, you can attach a lock to the security slot on the side of the UniFi Switch.



UniFi G3 Video Camera Compatibility

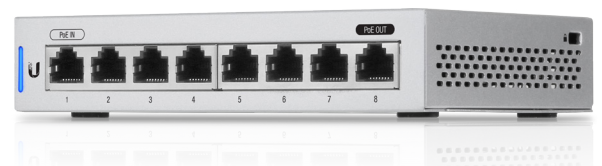
The UniFi Switch is compatible with UniFi G3 Video Cameras, as detailed below.

Camera Model	US-8	US-8-60W	US-8-150W	US-16-150W	US-24-250W	US-24-500W	US-48-500W	US-48-750W
UVC-G3	Use Adapter*	Use Adapter*	✓	✓	✓	✓	✓	✓
UVC-G3-DOME	✓	✓	✓	✓	✓	✓	✓	✓

* Suitable adapters: INS-3AF-I-G, INS-3AF-O-G

Specifications

US-8	
Dimensions	148.0 x 99.5 x 30.7 mm (5.83 x 3.92 x 1.21")
Weight	432 g (15.24 oz)
Enclosure Characteristics	SGCC Steel
Total Non-Blocking Throughput	8 Gbps
Switching Capacity	16 Gbps
Forwarding Rate	11.9 Mpps
Max. Power Consumption	12W (Excluding PoE Output)
Max. Passive PoE Wattage per Port	PoE Mode 1: 12W @ 802.3at PoE Mode 2: 12W @ 48V DC Input Mode: 12W @ 48V
Passive PoE Voltage Range	Depends on Power Source
Power Method	(1) DC 48V, Max. 1.25A (1) PoE Input, 802.3 af/at (Pins +1, 2; -3, 6)
Supported Voltage Range	DC: 48V; 48V Mode: 56V to 40V
Power Supply	External AC/DC Adapter, 48V, 0.5A
LEDs	PoE (Port 8), Speed/Link/Activity (All Ports)
Networking Interfaces	(8) 10/100/1000 Mbps RJ45 Ports
PoE In Interface (Port 1)	PoE Mode 1: 802.3af/at (Pins +1, 2; -3, 6) PoE Mode 2: 48V (2-Pair Pins +4, 5; -7, 8)
PoE Out Interface (Port 8)	PoE Mode 1: 48V (Pins +1, 2; -3, 6) PoE Mode 2: Passive 48V (2-Pair Pins +4, 5; -7, 8) DC Input Mode: DC Passthrough (Pins +1, 2; -3, 6)
Management Interface	Ethernet In-Band Management
ESD/EMP Protection	Air: ± 24 kV, Contact: ± 24 kV
Operating Temperature	-5 to 45° C (23 to 113° F)
Operating Humidity	5 to 95% Noncondensing
Shock and Vibration	ETSI300-019-1.4 Standard
Certifications	CE, FCC, IC



Specifications

US-8-60W	
Dimensions	148.0 x 99.5 x 30.7 mm (5.83 x 3.92 x 1.21")
Weight	432 g (15.24 oz)
Enclosure Characteristics	SGCC Steel
Total Non-Blocking Throughput	8 Gbps
Switching Capacity	16 Gbps
Forwarding Rate	11.9 Mpps
Max. Power Consumption	12W (Excluding PoE Output)
Max. PoE Wattage per Port	15.4W
Power Method	48VDC, Max. 2A
Supported Voltage Range	57VDC to 44VDC
Power Supply	External AC/DC Adapter, 48V, 1.25A
LEDs	PoE (Port 8), Speed/Link/Activity (All Ports)
Networking Interfaces	(8) 10/100/1000 Mbps RJ45 Ports
PoE Interfaces	(4) Ports 5, 6, 7, 8; IEEE802.3af
ESD/EMP Protection	Air: ± 24 kV, Contact: ± 24 kV
Operating Temperature	-5 to 45° C (23 to 113° F)
Operating Humidity	5 to 95% Noncondensing
Shock and Vibration	ETSI300-019-1.4 Standard
Certifications	CE, FCC, IC

Related Product Datasheets



UniFi PoE Switches:

[ubnt.com/datasheets/unifi/UniFi PoE Switch.pdf](http://ubnt.com/datasheets/unifi/UniFi_PoE_Switch.pdf)



UniFi G3 Video Cameras:

[dl.ubnt.com/datasheets/unifi/UniFi Video G3 DS.pdf](http://dl.ubnt.com/datasheets/unifi/UniFi_Video_G3_DS.pdf)

Specifications are subject to change. Ubiquiti products are sold with a limited warranty described at: www.ubnt.com/support/warranty
©2016-2017 Ubiquiti Networks, Inc. All rights reserved. Ubiquiti, Ubiquiti Networks, the Ubiquiti U logo, the Ubiquiti beam logo, and UniFi are trademarks or registered trademarks of Ubiquiti Networks, Inc. in the United States and in other countries. All other trademarks are the property of their respective owners.