



LTE-Advanced Mobile Wi-Fi

300Mbps to Go:
Lightening Fast Mobile Wi-Fi Around

M7450



4G 4G LTE
300Mbps

AC1200 Dual
Band Wi-Fi

15hrs
Usage

Highlights

Share LTE-Advanced Connection on the Go

The M7450 features a compact, elegant design very suitable for travel, business trips, outdoor activities or wherever you may be.



All Useful Info at a Color Screen

The 1.44 inch TFT intuitive screen display of M7450 makes it easy to stay within your data budget and helps avoid going over the monthly data cap. The screen also displays other much more information of battery life, signal strength, Wi-Fi status and connected users.



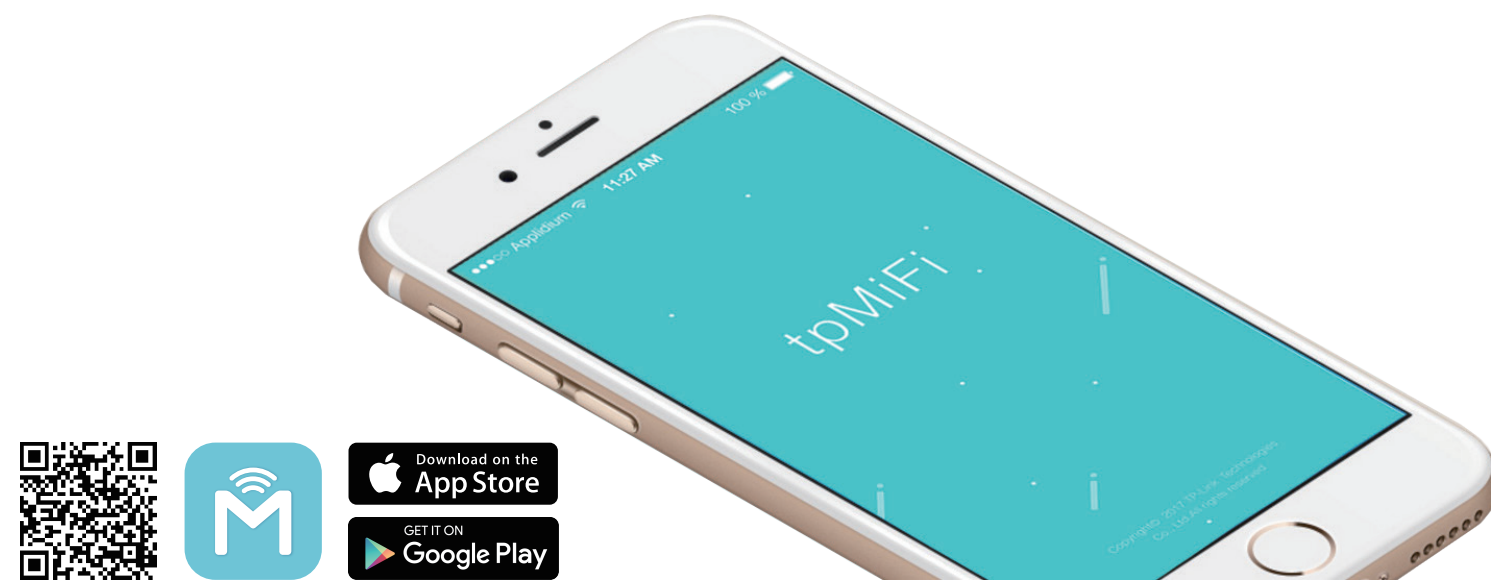
- Signal Strength
- 4G/3G/2G Network Type
- Data Roaming
- Message
- Connected Devices
- Battery Life
- WPS
- Wi-Fi Band
- Network Mode

* Parameters above are only for demonstration.

Highlights

Easy Management with the tpMiFi App

With the tpMiFi App, you can easily access and manage the M7450 from your connected iOS/Android devices. The tpMiFi app allows you to establish data limits, control which devices can access your Wi-Fi, send messages, and share media files to/from a removable Micro SD card.



Features



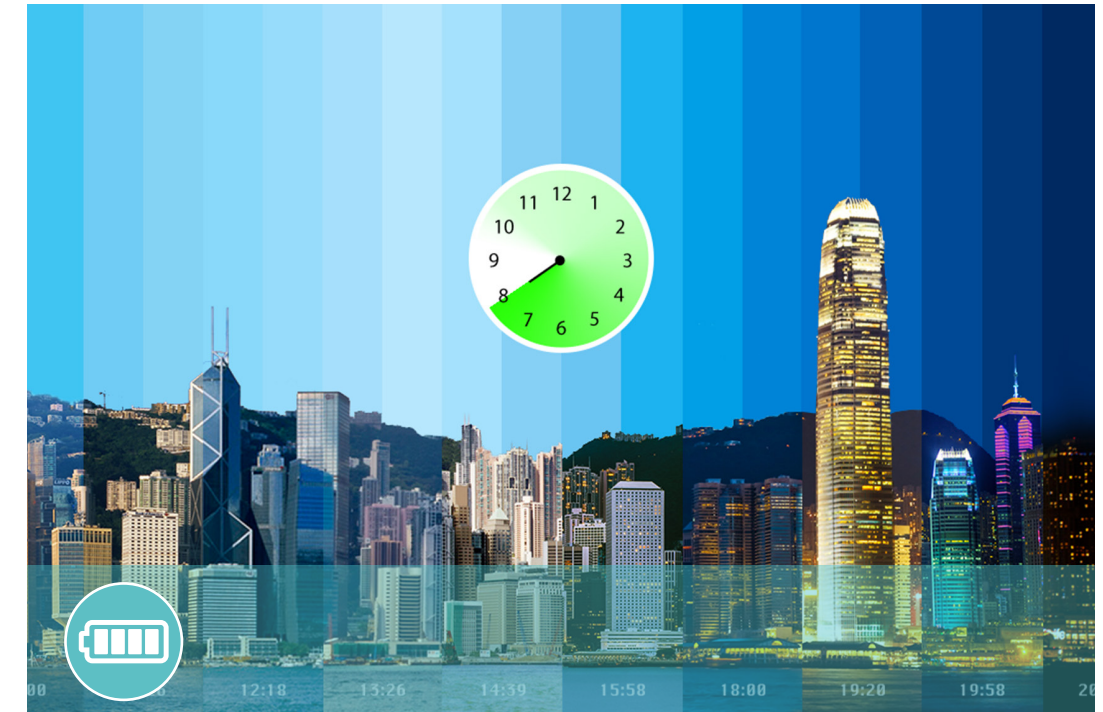
Lightning 4G LTE Advanced

- The latest generation 4G LTE Advanced – Supports 4G LTE advanced network, compatible with 3G/2G network
- The Faster Connections – Reaches up to 300Mbps download speed and 50Mbps upload one, to enjoy HD movies without interruption, download files in seconds, and hold a video chat without dropouts.



Dual Band Wi-Fi

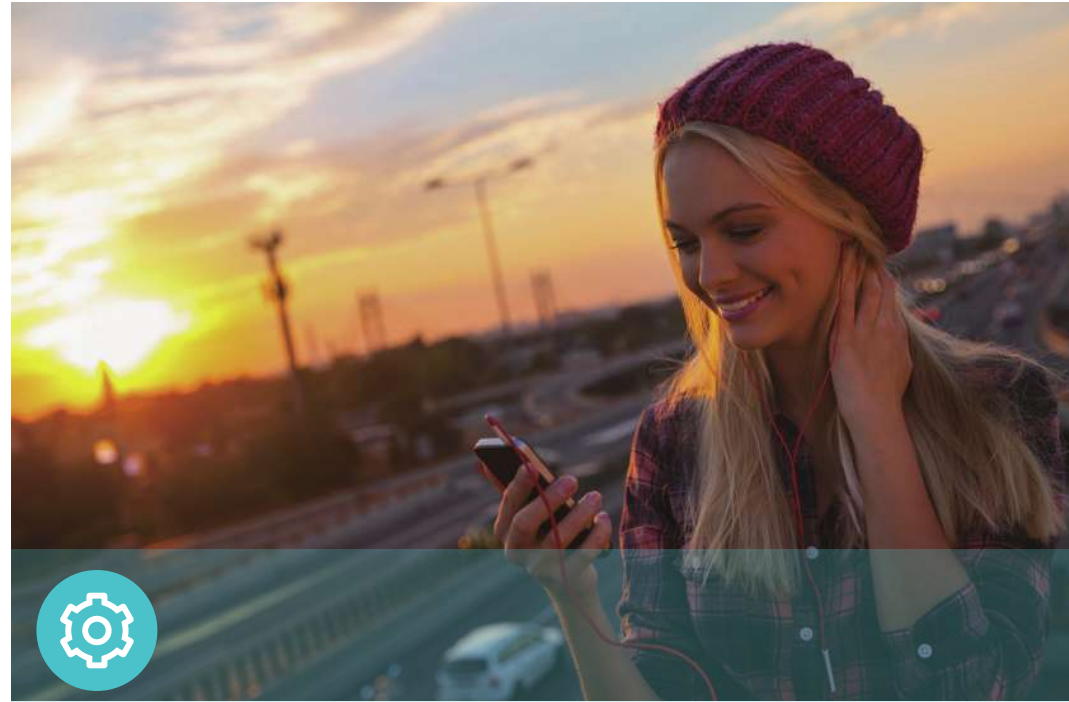
- Dual Band Wi-Fi– Selectable 2.4GHz or 5GHz dual band Wi-Fi achieves better network connectivity when you are in network interference.
- High-Speed Hotspots– Shares 2.4GHz 300Mbps or 5GHz 867Mbps Wi-Fi with up to 32 Wi-Fi devices.



15 Hours Usage

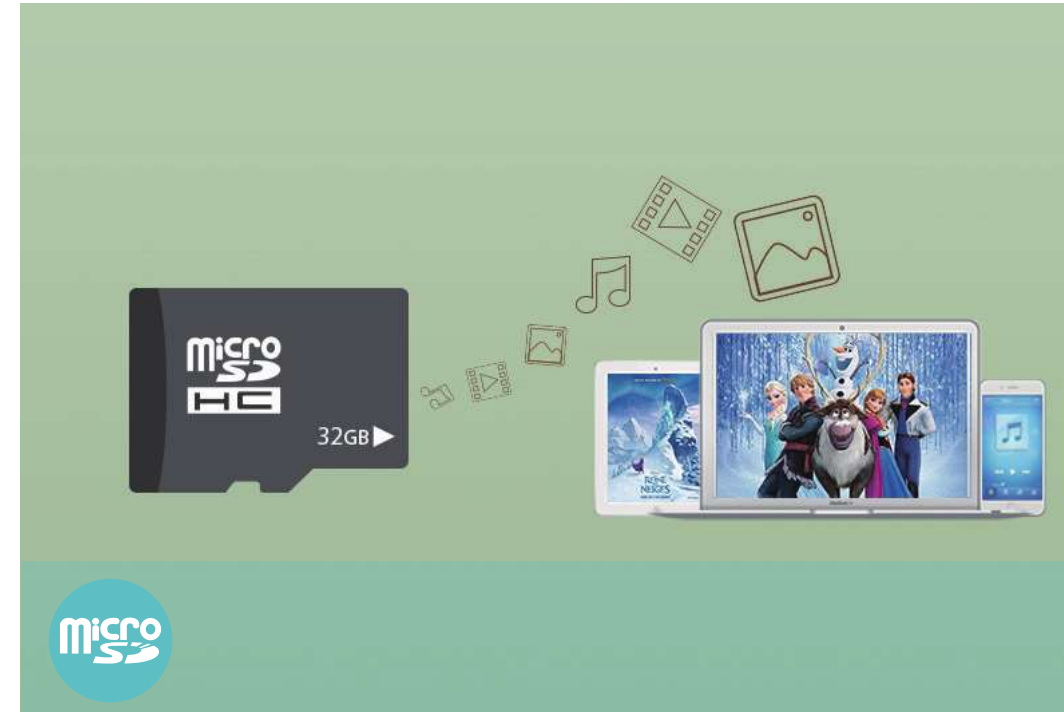
- 3000mAh – 3000mAh battery capacity
- 15 hours – 15 hours of 4G sharing
- 720 hours – 720 hours of standby
- * Actual battery time may vary due to different using environments

Features



Easy Using

- One-Key Setup – To create a hotspot, just insert a SIM card and press the power button.
- 32 devices – Supports up to 32 devices simultaneously to share 4G/3G/2G network
- Compact design – Suitable for travel, business trips, outdoor activities or wherever you may be



Storage Wireless Sharing

- Storage Sharing – Easily share photos, music, videos and more wirelessly across your network
- Up to 32GB – Equipped with a micro SD card slot for up to 32GB of optional storage

Specifications

Hardware

- Interface : 1 micro USB port for power supply, 1 micro SIM card slot, 1 micro SD card slot
- Button: Power On/Off Button, Menu Button, Reset Button
- Screen Display: Traffic statistics, Wi-Fi status, User numbers, Network type (2G/3G/4G), Signal strength, Internet connection status, Messages, Battery life, Wi-Fi name, Wi-Fi password
- External Power Supply: 5V/1A
- Dimensions (W x D x H): 4.4 × 2.6 × 0.6 in. (112 × 66 × 16mm)
- Antenna: Internal antennas

Wireless

- Network Type:
 - 4G: FDD-LTE B1/B3/B7/B8/B20 (2100/1800/2600/900/800MHz)
 - TDD-LTE: B38/B40/B41 (2600/2300/2500MHz)
 - 3G: DC-HSPA+/HSPA/UMTS B1/B8 (2100/900MHz)
 - 2G: EDGE/GPRS/GSM (850/900/1800/1900MHz)
- Wireless Standards: IEEE 802.11n/a/ac 5GHz, IEEE 802.11b/g/n 2.4GHz
- Frequency: 5GHz and 2.4GHz
- Signal Rate: Selectable dual band, 300Mbps at 2.4GHz or 867Mbps at 5GHz
- Transmit Power: <20dBm
- Reception Sensitivity:
 - 5GHz: 11a 54Mbps: -70dBm
 - 11n HT20 MCS7: -68dBm
 - 11n HT40 MCS7: -65dBm
 - 2.4GHz: 11b 11Mbps: -86dBm
 - 11g 54Mbps: -71dBm
 - 11n HT20 MCS7: -68dBm
 - 11n HT40 MCS7: -65dBm
- Wireless Security: Support WPA-PSK/WPA2-PSK, Wireless MAC Filtering, Enable/Disable SSID Broadcast
- DHCP: Server, Client, DHCP Client List

Specifications

Others

- Certification: CE, RoHS
- System Requirements:
Windows 10/8/7/vista/XP, Mac OS, Android, iOS, Windows Phone
- Environment:
Operating Temperature: 0°C~35°C (32°F ~95°F)
Storage Temperature: -20°C~60°C (4°F ~140°F)
Operating Humidity: 10%~90% non-condensing
Storage Humidity: 5%~90% non-condensing
- Package Contents:
LTE-Advanced Mobile Wi-Fi M7450
Micro USB Cable
Nano to Micro SIM Card Adapter
Quick Installation Guide
3000mAh Battery



For more information, please visit

<http://www.tp-link.com/en/products/details/M7450.html>

or scan the QR code left

Attention: This device may only be used indoors in all EU member states and EFTA countries.

Specifications are subject to change without notice. TP-Link is a registered trademark of TP-Link Technologies Co., Ltd. Other brands and product names are trademarks or registered trademarks of their respective holders. Copyright ©2017 TP-Link Technologies Co., Ltd. All rights reserved.

www.tp-link.com

TP-Link LTE-Advanced Mobile Wi-Fi M7450