

**VESA mount accessory PV02 –
for XG41/XH61 series Slim PCs**

Its optional VESA75/100 wallmount allows the Shuttle Slim-PC XG41 and XH61 to be installed on to walls or just affixed on the rear side of a monitor which is particularly interesting for the industry segment, company buildings and public institutions.

**Shuttle Accessory
PV02**



Feature Highlight

Scope of delivery	<ul style="list-style-type: none"> • VESA mount • 2 screws
Material	<ul style="list-style-type: none"> • Metal, black
Dimensions	<ul style="list-style-type: none"> • approx. 22 x 10 x 8 cm WHD • (without mounting screw)
Compatibility	<ul style="list-style-type: none"> • Compatible with Shuttle XG41 and XH61 Slim-PC series • Supports 75 and 100mm VESA standards



Article number: *PV02*
Order number: *POI-PV02*



Mounting screw

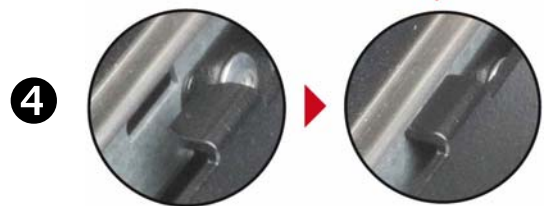
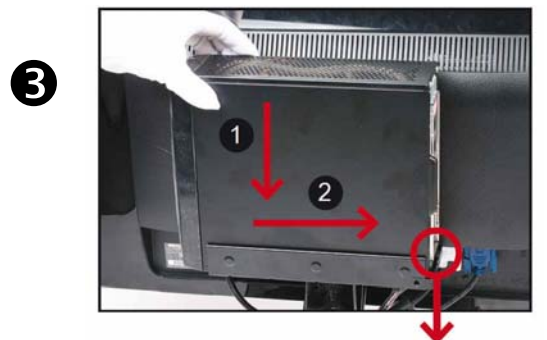
Images for illustration purposes only.

XG41 VESA Mount (PV02) – Quick Installation Guide

Please install with reference to the following steps:

Due to safety reasons, please turn off your computer completely first and unplug it from the power supply.

- ❶ Please unpack the PV02 VESA mount accessory and two screws.
- ❷ Fasten the VESA MOUNT at rear of LCD monitor with two screws.
- ❸ As shown, install the XG41 in the VESA MOUNT and push it towards the direction as indicated by the red arrow.
- ❹ Slide the latch into the lock position.
- ❺ Check that it is properly aligned, then tighten securely with one thumbscrew.



©2009 by Shuttle Computer Handels GmbH (Germany). All information subject to change without notice. Pictures for illustration purposes only.