

PERFORMANCE

Processor

AMD Ryzen™ 7 7735U (8C / 16T, 2.7 / 4.75GHz, 4MB L2 / 16MB L3)

Graphics

Integrated AMD Radeon™ 680M Graphics

Chipset

AMD SoC Platform

Memory

16GB Soldered LPDDR5-6400

Memory Slots

Memory soldered to systemboard, no slots, dual-channel

Max Memory

16GB soldered memory, not upgradable

Storage

1TB SSD M.2 2242 PCIe® 4.0x4 NVMe®

Storage Support

One drive, up to 1TB M.2 2242 SSD

Storage Slot

One M.2 2242 PCIe 4.0 x4 slot

Card Reader

microSD Card Reader

Audio Chip

High Definition (HD) Audio, Realtek® ALC3306 codec

Speakers

Stereo speakers, 2W x2, optimized with Dolby® Atmos®, Smart Amplifier (AMP)

Camera

FHD 1080p + IR with Privacy Shutter

Microphone

2x, Array

Battery

Integrated 71Wh

Max Battery Life

WUXGA OLED models:

MobileMark® 2018@200nits: 14 hr

Local video (1080p) playback@150nits: 19 hr

Power Adapter

65W USB-C® (3-pin)

DESIGN

Display

14" WUXGA (1920x1200) OLED 400nits Glossy, 100% DCI-P3, 60Hz, DisplayHDR™ True Black 500, Dolby Vision™, TÜV Low Blue Light, Glass, Touch

Touchscreen

OGM, 10-point Multi-touch

Keyboard

Backlit, Swiss

Case Color

Tidal Teal

Surface Treatment

Aluminium Stamping (Anodized with Sandblasting)

Case Material

Aluminium (Top), Aluminium (Bottom)

Pen

Lenovo® Digital Pen

Dimensions (WxDxH)

317.9 x 222.5 x 17.5 mm (12.5 x 8.8 x 0.7 inches)

Weight

Starting at 1.49 kg (3.28 lbs)

SOFTWARE

Operating System

Windows® 11 Home, Swiss (EN/FR/DE/IT)

Bundled Software

Office Trial

CONNECTIVITY

Ethernet

No Onboard Ethernet

WLAN + Bluetooth®

Wi-Fi® 6E, 11ax 2x2 + BT5.1

Standard Ports

- 1x USB 3.2 Gen 1 (Always On)
- 1x microSD card reader
- 1x USB-C 3.2 Gen 2 (support data transfer, Power Delivery 3.0 and DisplayPort™ 1.4)
- 1x USB4® 40Gbps (support data transfer, Power Delivery 3.0 and DisplayPort 1.4)
- 1x Headphone / microphone combo jack (3.5mm)
- 1x HDMI® 1.4b

SECURITY & PRIVACY

Security Chip

Firmware TPM 2.0

Other Security

- Camera privacy shutter
- IR camera for Windows Hello

SERVICE

Base Warranty

2-year, Courier or Carry-in

Included Upgrade

2Y Premium Care with Onsite upgrade from 2Y Courier/Carry-in (5WSOT73704), CO2 Offset 0.5 ton (2nd Generation Carbon Offset Projects) (5WS1L72252)

CERTIFICATIONS

Green Certifications

- ErP Lot 6
- EPEAT™ Gold
- ErP Lot 26
- RoHS compliant
- ENERGY STAR® 8.0

Other Certifications

TÜV Rheinland® Low Blue Light (Hardware Solution)

Mil-Spec Test

MIL-STD-810H military test passed

MODEL

TopSeller	: Yes	Announce Date	: 2023-03-13
EAN / UPC / JAN	: 197529480816	End of Support	: 2029-04-27



AMD

- Lenovo reserves the right to change specifications or other product information without notice.
- Product image on this page is a sample, it may not match the real color of this model
- Battery life is an estimated maximum. Actual battery life may vary based on many factors, including screen brightness, active applications, features, power management settings, battery age and conditioning, and other customer preferences

Premium Care - Advanced Support from Real People. Real Fast.



REAL PERSON

Choose how you want to reach us - through the phone, chat or email - our expert technicians will take care of you.



REAL FAST

Highly trained technicians will provide you real-time solutions, whatever the issue, on your first contact. If needed, our team will schedule an onsite visit for the next business day.



HASSLE FREE

'Getting started' and 'how-to' assistance for hardware and software. Easy solutions that are simple to reach - that's how Premium Care delivers you the ideal support experience.



PC HEALTH CHECK

Free annual PC Health Check that allows our experts to spot issues before you do so they can resolve them quickly and help you avoid PC problems.

Accidental Damage Protection - Protection of your PC from the unexpected.

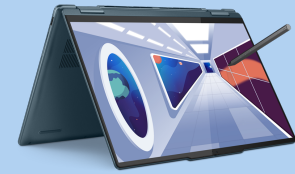
Experience shows that a significant portion of devices may be damaged (and not covered under warranty) in the first three years. Lenovo's Accidental Damage Protection service covers accidents beyond the system warranty such as drops, spills, bumps and even electrical surges. Make sure your new device has maximum protection, avoid unplanned costs and get peace of mind.

Base Warranty – Included with the systems you purchase, default 1- or 3-year coverage window.

Warranty Extensions & Upgrades – Service and protection that's right for your circumstances.

- Pick Up & Return Courier
- Onsite Support
- Technician Installed Customer
- Replaceable Unit Service
- International Warranty Upgrade

Lenovo may not offer the products, services or features discussed in this document in all regions. Lenovo may withdraw an offering at any time. Consult your local representative for information on offerings available in your area. Lenovo reserves the right to change specifications or other product information without notice. Lenovo is not responsible for photographic or typographical errors. Lenovo provides this publication "as is" without warranty of any kind, either express or implied, including the implied warranties of merchantability or fitness for a particular purpose.



AMD



AMD

Recommended Services

BEST	4Y Premium Care upgrade from 2Y Premium Care (5WS1C83325)
BETTER	3Y Premium Care upgrade from 2Y Premium Care (5WS1C83323)

For a full list of accessories and services, please visit:
<https://smartfind.Lenovo.com>

Lenovo

PSREF
Product Specifications
Reference