

PERFORMANCE

Processor

Qualcomm® Snapdragon™ SDM680 (8C, 4x A73 @2.4 GHz + 4x A53@1.9 GHz)

Graphics

Integrated Qualcomm Adreno™ 610 GPU

Chipset

Qualcomm SoC Platform

Memory

4GB Soldered LPDDR4x

Storage

64GB UFS 2.2 (uMCP)

Expandable Memory

microSD Card (up to 1TB)

Card Reader

Nano-SIM & microSD Card Slot

Storage Support

- 64GB uMCP (UFS-Based MCP, UFS 2.2)
- microSD card, supports up to 1TB

Camera

Front 8.0MP / Rear 8.0MP

Microphone

Mono

Speakers

4 stereo speakers, 1W x4, optimized with Dolby® Atmos®

Sensors

- Accelerometer (G) sensor
- Ambient light sensor (ALS)
- Gyroscope sensor
- Hall sensor

Vibration Motor

Eccentric Rotating Mass (ERM)

Battery

Integrated 7500mAh (Min.) / 7700mAh (Typ.)

Max Battery Life

Standby: 4 wks

Online video playback: 12 hr

Web browsing: 14 hr

Music playback: 60 hr

Charging Time

Around 5 hr to fully charged

Power Adapter

5V / 2A

DESIGN

Display

10.61" 2K (2000x1200) IPS 400nits Anti-fingerprint, 72% NTSC, Touch

Touchscreen

In-cell, 10-point Multi-touch

Case Material

PC + Metal

Pen

Lenovo® Precision Pen 2

Dimensions (WxDxH)

251.2 x 158.8 x 7.45 mm (9.89 x 6.25 x 0.29 inches)

Weight

Around 465 g (1.03 lbs)

Case Color

Storm Grey

SOFTWARE

Operating System

Android™ 12 or Later

CONNECTIVITY

WLAN + Bluetooth®

11ac 2x2 + BT5.1

WWAN

4G LTE

SIM Card

None

VoiceCall

Voice Call

Standard Ports

- 1x USB-C® 2.0 (support data transfer and charging)
- 1x Headphone / microphone combo jack (3.5mm)

Optional Ports (configured)

1x Nano-SIM & microSD Card Slot

SERVICE

Base Warranty

2-year, Courier with 1-year Battery

ACCESSORIES

Bundled Accessories

Folio Case

CERTIFICATIONS

Green Certifications

- ErP Lot 3
- RoHS compliant

Other Certifications

TÜV Rheinland® Low Blue Light (Hardware Solution)

MODEL

Product : TB128XU

TopSeller : No

Announce Date : 2022-06-14

EAN / UPC / JAN : 196379801741



· Lenovo reserves the right to change specifications or other product information without notice.

· Product image on this page is a sample, it may not match the real color of this model

· Battery life is an estimated maximum. Actual battery life may vary based on many factors, including screen brightness, active applications, features, power management settings, battery age and conditioning, and other customer preferences

Premium Care - Advanced Support from Real People. Real Fast.



REAL PERSON

Choose how you want to reach us – through phone, chat, or email – our expert technicians will take care of your device issues.



REAL FAST

Highly trained technicians will provide you real-time solutions, whatever the issue, on your first contact. If the issue can't be solved remotely, our team will schedule a repair via depot / carry-in support to resolve your issue.



HASSLE FREE

'Getting started' and 'how-to' assistance for hardware and software. Easy solutions that are simple to reach – that's how Premium Care delivers you the ideal support experience.

Accidental Damage Protection One - Protection for your Tablet from the unexpected.

Avoid the hassles of unexpected damage & repair costs. With coverage for drops, spills, electric surges, and broken LCD screens, accidental damage protection makes it easy to repair to your Tablets, permitting a single repair during the coverage period.

Base Warranty - Included with the system you purchase with default 1-year coverage window.

Lenovo Warranty Extensions & Upgrades (up to 3 years duration) - Gain complete peace of mind by extending your base warranty to up to 3 years and minimize unexpected repair costs.

- Pick up & return courier / Depot support
- Replaceable unit service*

*Applicable in some regions only. Please check with your local services team for more details.

Lenovo may not offer the products, services or features discussed in this document in all regions. Lenovo may withdraw an offering at any time. Consult your local representative for information on offerings available in your area. Lenovo reserves the right to change specifications or other product information without notice. Lenovo is not responsible for photographic or typographical errors. Lenovo provides this publication "as is" without warranty of any kind, either express or implied, including the implied warranties of merchantability or fitness for a particular purpose.

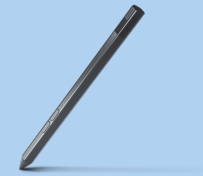
Recommended Accessories



Lenovo Active Pen 3 (2023)

ZG38C04479

With 4,096 levels of pressure and tilt detection, the Lenovo Active Pen 3 (2023) affords users the highest level of precision and control as they sketch or just take notes.



Lenovo Precision Pen 2(US)

ZG38C03380

With 4,096 levels of pressure and tilt detection, the Lenovo Precision Pen 2 affords users the highest level of precision and control as they sketch or just take notes. With up to 100 hours usage*, write or draw all d...

For a full list of accessories and services, please visit:
<https://smartfind.Lenovo.com>

Lenovo

PSREF
Product Specifications
Reference