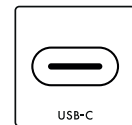




## CS2740

### Your advantages

**4K UHD**  
3840 × 2160



From photographers who make films to videographers who take photographs, right through to time-lapse photography and cinemagraphs – the borders between visual content are becoming visibly blurred, while also growing ever closer at the same time. Videographers want to see their material in 4K UHD resolution, while photographers wish to preview the full sharpness of their printed images on the monitor. The ColorEdge CS2740 from EIZO fulfils both these requirements down to a tee. A graphics monitor's most important task is to display exactly what is stored in the camera. That's why each ColorEdge CS2740 is individually measured and optimally configured in the factory. The ColorEdge CS2740's hardware can be calibrated in just 90 seconds (measured using a MacBook Pro and EX4) without loss, which means that it consistently retains its factory-set perfection across its entire service life. A powerful notebook is often the only computer available. Thanks to its four USB downstream ports and its USB-C upstream port, hard disks, mice, keyboards and other peripheral devices such can be connected directly to the CS2740. With a single USB-C cable on the CS2740, the computer can be integrated into the complete desktop workflow and is supplied with up to 60 watts of power. Plus, the monitor also has HDMI and DisplayPort inputs. This makes the ColorEdge CS2740 the central hub for discerning creative professionals.

- ✓ 27-inch wide gamut LCD with 3840 x 2160 pixels (4K-UHD) delivers ultra-sharp details
- ✓ Wide gamut covering 99% of the Adobe RGB colour gamut
- ✓ Precise hardware calibration of brightness, white balance and gamma
- ✓ Digital Uniformity Equalizer for top-rate luminance distribution and colour purity
- ✓ Colour precision with 16-bit look-up-table and up to 10-bit colour reproduction
- ✓ USB-C (DisplayPort signal channel and power supply up to 60 watts), DisplayPort and HDMI inputs
- ✓ USB hub with 2 USB 3.1 and 2 USB 2.0 downstream ports
- ✓ EIZO microchip ensures precise, consistent and lasting colour display
- ✓ Recommended optional accessories: Measurement sensor for hardware calibration and monitor hood

## Features

### 4K UHD resolution

Thanks to the resolution of 3840 x 2160 (4K UHD), the CS2740 has an enormous pixel density of 164 ppi. Visible monitor pixels are thus guaranteed to be a thing of the past, and the monitor display provides a highly meaningful impression of the subsequent print resolution. Films can be evaluated, cut and graded with the CS2740 in full 4K UHD resolution.

### Wide gamut – gamut for saturated colours

A monitor with the widest possible gamut is needed so that the entire colour spectrum of modern cameras can be used. Only then is it possible to visually assess and edit the saturated hues contained in the file. Therefore, the IPS panel of the ColorEdge CS2740 covers, for example, the wide AdobeRGB photo gamut to 99% as well as the ISO-Coated V2 CMYK print gamut. As a result, the full colour spectrum of modern cameras is displayed unaltered and without gaps. Moreover, a precise simulation of the print result in the soft-proofing view is guaranteed.



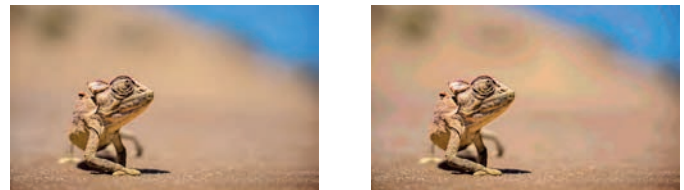
### Outstandingly sharp image quality

The screen has an impressive top resolution (3840 x 2160 (4K UHD)), a very good contrast ratio of 1000:1 and a brightness of 350 cd/m<sup>2</sup>. For example, you can edit graphics and images down to the pixel. As an added benefit, text contours are clear and precise. The LCD panel with the IPS (Wide Gamut) panel allows for a viewing angle of 178 degrees. Ensuring that hue and contrast remain stable for the viewer.



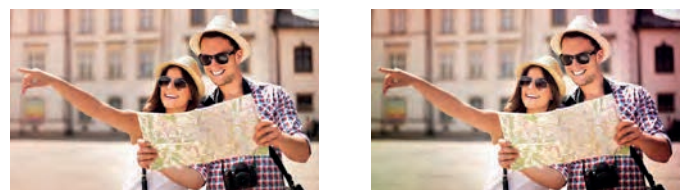
### Smooth and fluid transitions and gradients thanks to 16-bit LUT and 10-bit mode

The LUT (look-up-table) on the CS2740 employs internal calculations with 16 bits for an extremely high colour depth and outputs the signals with up to 10 bits. This provides billions of hues for calculating the precise monitor display, effectively preventing display errors caused by the monitor such as banding or clipping, which can result in tonal breaks in gradients or unnecessary colours in greyscale. Even fine nuances and structures in dark or highly saturated areas of the image can be displayed in a differentiated and detailed manner.



### Digital Uniformity Equalizer – perfect rendering across the entire screen

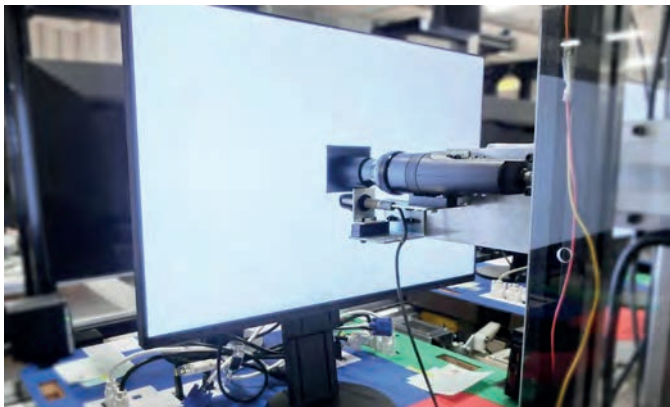
Each individual monitor panel is precisely measured over the entire surface at the EIZO factory. Any inhomogeneities in brightness and unnecessary colour are detected and removed. This process (Digital Uniformity Equalizer) guarantees that identical colours always look the same over the entire service life of the monitor, no matter where they are displayed. Only in this way is precise image processing and retouching possible.



## Features

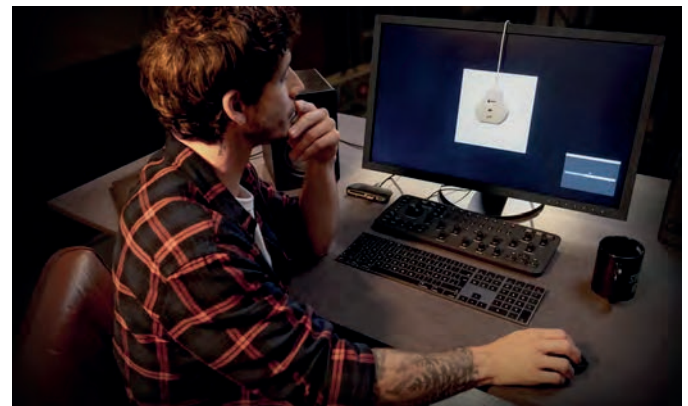
### Ready to use right out of the box – perfect settings right from the factory

Every ColorEdge CS2740 is individually measured and optimally configured in the factory, enabling it to be used immediately after it has been unboxed. To this end, the gamma curves for the red, green and blue channels are closely checked and corrected, if necessary. This unique EIZO factory calibration enables the user to start using the monitor with the preset gamut range right out of the box. This painstaking calibration at the factory ensures that the user can quickly recalibrate the monitor if needed using ColorNavigator.



### Fast, easy and lossless hardware calibration without any compromises

It is essential that the monitor is regularly calibrated to ensure that it always displays the same file in the same way over its entire service life. To do so, all ColorEdge monitors employ lossless hardware calibration. Unlike software calibration, which always involves the risk of loss of display quality, hardware calibration not only creates an adjustment profile for the graphics board but also calibrates the monitor's LUT (look-up-table).



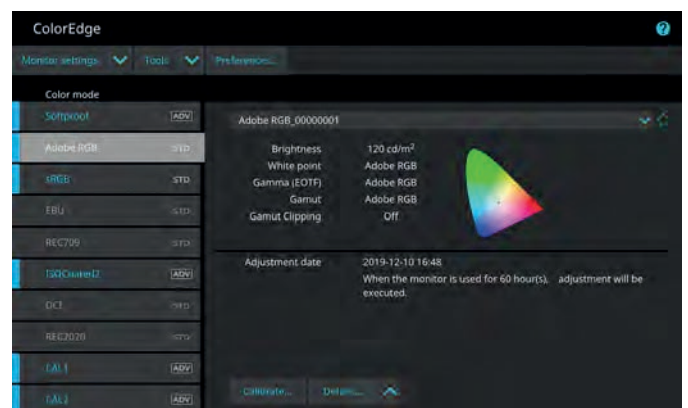
### EIZO software for fast calibration and printing

Each monitor ages and changes its display properties. This is why graphics monitors, which require an absolutely constant image display over the entire service life, must be regularly calibrated and adjusted. With the free calibration software ColorNavigator 7 from EIZO, the ColorEdge CS2740 can be adjusted within 90 seconds (measured with a MacBook Pro and EX4), easily and without any losses. This is to ensure that the same image still looks the same on the monitor five years from now.

[More information on the EIZO ColorNavigator](#)

The free Quick Color Match software helps users, even without in-depth expertise in colour management, to see on the monitor how their images will look when printed on their Canon or Epson inkjet printer at home. In this way, the images can be optimised for the special properties of the selected photo paper even before printing, which helps users avoid expensive misprints.

[More information on Quick Color Match](#)





## Features

### EIZO microchip for optimised colour reproduction

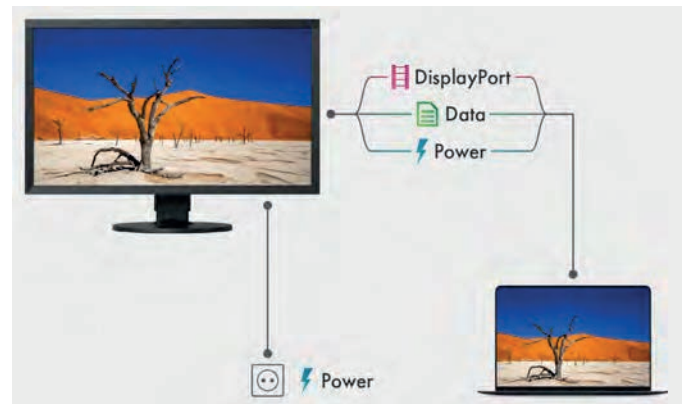
The CS2740 has a high-quality microchip (ASIC, Application-Specific Integrated Circuit), which EIZO developed especially for the special requirements involved in work demanding high colour accuracy. This microchip is the brain of a ColorEdge as it guarantees the precise, uniform and constant image display that is the hallmark of EIZO.



### Cutting-edge connectivity with USB-C

One single USB-C cable is all that is needed to provide a monitor signal, transfer data quickly and supply power (up to 60 watts), among many other feats. This makes the ColorEdge CS2740 the central dock for workflows in graphic design. Peripherals such as mice, keyboards, hard disks, card readers and printers can be connected directly to the two USB-A ports on the side and at the bottom. The USB-C cable can be used to charge laptops and tablet computers at up to 60 watts, transforming your laptop and CS2740 into a full-fledged desktop workstation.

[Read more about USB-C in EIZO Monitor know-how.](#)



### Monitor ports

The CS2740 supports a wide range of video formats via USB-C, HDMI and DisplayPort inputs. As a result, the monitor can be integrated into PC-based workflows and can be used with HDMI feeds.



### Work without screen flicker – your eyes will thank you for it

Many monitors flicker imperceptibly. This flickering is not consciously perceived, but it causes the eyes to tire more quickly. That is why EIZO attaches great importance to flicker-free monitors. This is great for users, as their eyes will not tire as quickly, allowing them to work in front of the screen for longer periods of time without fatigue.

## Features

### Modern antireflection technology

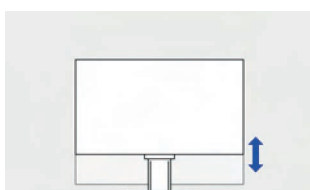
Nothing is more distracting than dazzling reflections on the monitor. That is why all EIZO monitors use modern antireflection technology. This does not just protect your eyes from excessive strain, but also saves you from having to assume uncomfortable positions while sitting in front of your monitor.



### Stand – ergonomic and stable

Our screens offer continuous height adjustment. Depending on the model, they can even be lowered to the base plate of the stand. This guarantees the best possible ergonomics, regardless of whether the user is sitting or standing in front of the screen. You can also swivel, rotate and tilt the monitor base to the position that is most comfortable for your posture.

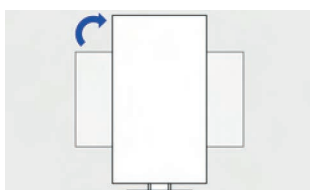
The CS2740 can also be rotated into the portrait format, which is a great advantage for tethered shoots of people in the portrait mode, for example.



155 mm



Back 35°, front 5°



Clockwise rotation 90°



344°

### Socially responsible production

The CS2740 is produced in a socially responsible way. It is free of child labour and forced labour. Suppliers along the supply chain have been carefully selected and they have also committed themselves to produce in a socially responsible way. This applies in particular to conflict minerals. We present a detailed report about our social responsibility annually and voluntarily.

[Read the CSR report here](#)



### Environmentally and climate friendly

Each CS2740 is manufactured in our own factory, which implements an environmental management system in accordance with ISO 14001. This includes measures to reduce waste, wastewater and emissions, resource and energy consumption, as well as to encourage environmentally conscious behaviour among employees. We publicly report on these measures on an annual basis as a main component of our CSR report.

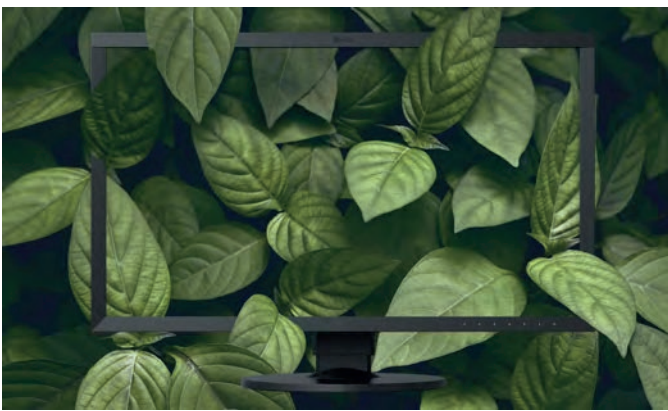


## Features

---

### **Sustainable and durable**

The CS2740 is designed for a long service life that takes into account the entire lifecycle and impact on the environment. It is generally well above the five-year guarantee. Spare parts are available up to five years after the end of production. The monitor's long service life and the ability to repair it save resources and the climate. When designing the CS2740 we paid attention to reducing resource consumption by using high-quality components and materials and being meticulous in production.



### **A five-year warranty and long service life**

Superior material, careful workmanship and meticulous final inspection ensure such extraordinary longevity, making it possible for us to offer a five-year warranty including on-site replacement service (only in Germany and the Netherlands).



# Specification

## General

Item no.	CS2740
Case colors	Black
Solutions	Photography, design & media
Product line	ColorEdge
EAN	4995047055624

## Display

Screen size [in inches]	26.9
Screen size [in cm]	68.4
Format	16:9
Viewable image size (width x height)	596.2 x 335.4
Ideal and recommended resolution	3840 x 2160 (4K UHD)
Pixel density [ppi]	164
Resolution Supported	3840 x 2160 (4K UHD), 2560 x 1600, 2560 x 1440, 1920 x 1200, 1600 x 1200, 1680 x 1050, 1280 x 1024, 1024 x 768, 800 x 600, 720 x 400, 640 x 480, 1080p (@ 60 Hz), 1080i (@ 60 Hz), 576p (@ 60 Hz), 480i (@ 60 Hz), 720p (@ 60 Hz), 1080p (@ 50 Hz), 1080i (@ 50 Hz), 720p (@ 50 Hz), 576p (@ 50 Hz), 1080p (@ 30/25/24 Hz), 2560 x 1440 (@ 30 Hz)
Panel technology	IPS (Wide Gamut)
Max. viewing angle horizontal	178 °
Max. viewing angle vertical	178 °
Number of colors or greyscale	1.07 billion colors (display port, 10 Bit), 1.07 billion colors (HDMI, 10 Bit), 16.7 million colors (display port, 8 Bit), 16.7 million colors (HDMI, 8 Bit), 16.7 million colors (DVI, 8 Bit)
Max. colour space	AdobeRGB (>99%), DCI P3 (>90%), sRGB (100%), ISO Coated V2 (>99%), Rec709 (100%), EBU (100%), SMPTE-C (100%)
Max. brightness (typical) [in cd/m <sup>2</sup> ]	350
Max. dark room contrast (typical)	1000:1
Typical response time [grey/grey alternation]	10 ms
Max. refresh rate [in hertz]	60
Backlight	LED

## Features

Hardware calibration of brightness, white point and gamma/EOTF	✓ with separate measurement sensor
Color palette / look-up table	278 trillion colour tones / 16 Bit
Digital Uniformity Equalizer	✓
No flickering	✓
I/P conversion (HDMI)	✓
Signal range amplifier (HDMI)	✓
Noise suppression (HDMI)	✓
HDCP Decoder	✓
Preset colour/greyscale modes	Adobe RGB, sRGB, 8x free modes for user selection
OSD language	de, en, fr, es, it, se, ja, zh
Adjustment options	Brightness, Contrast, Gamma, Colour saturation, Colour temperature, Colour tone, Signal input, Resolution, OSD language, Interpolation, DUE priority
Button Guide	✓
Signal inputs	USB Type-C (DisplayPort Alt Mode, HDCP 1.3), DisplayPort (HDCP 1.3), HDMI (Deep Colour, HDCP 2.2/1.4)
USB specification	USB 3.1 Gen 1
USB upstream ports	1 x type C (DisplayPort Alt Mode, 60 W max.), 1 x type B
USB downstream ports	4 x type A (2 x USB 3.1 Gen 1, 2 x USB 2.0)
USB Typ-C	✓
Video Signal	DisplayPort, HDMI (YUV, RGB)
Frequency	DisplayPort: 25.0 - 137 kHz, 23 - 61 Hz; HDMI: 15 - 135 kHz, 23 - 61 Hz
Input Signal Identification	✓

## Certification & Standards

Certification	CE, CB, TÜV/GS, TÜV/Ergonomics (including ISO 9241-307), cTÜVus, TÜV/S, EAC, PSE, FCC-B, CAN ICES-3 (B), RCM, VCCI-B, CCC, RoHS, China RoHS, WEEE
---------------	---

## Electric data

Power consumption (typical) [in watt]	36
Maximum Power Consumption [in watt]	168
Power Save Mode [in watt]	1
Power Consumption Off [in watt]	0
Energy-efficiency class	B
Annual Energy Consumption [in kWh]	62
Power Supply	AC 100-240V, 50/60Hz
Integrated power unit	✓

## Dimensions & Weights

Dimensions [mm]	638 x 404-559 x 265
Weight [in kilograms]	10.3
Swivel (right/left)	344 °
Incline forward/backward	5 ° / 35 °
Pivot	90 °
Height Adjustment Range [mm]	155
Hole Spacing	VESA standard 100 x 100 mm

## Software & Accessories

Accompanying software and other accessories are available for download	ColorNavigator, ColorNavigator Network (upon request), ICC colour profile
Additional Supply	Power cord, Signal cable DisplayPort - DisplayPort, USB, and signal cable (USB Type-C), Quick guide
Accessory	EX4 (Colorimeter for ColorEdge monitor calibration), EIZO ScreenCleaner (for the best possible clean without scratching the monitor), CH2700 (Monitor hood for CS2730, CS2731 and CS2740), HH200HS-K (HDMI (High Definition Multimedia Interface) cable to transfer digital video and audio signals.), TC-BRACKET3-BK (Thin Client mount in black for EIZO FlexStand 3 stand)

## Warranty

Warranty and service	5 years including on-site replacement service*
----------------------	--

### Terms

\*) The length of the warranty for the LCD module is five years from the date of purchase or 30,000 operating hours, depending on which happens sooner.\*\*) Zero pixel error guarantee for completely lit sub-pixels (partial pixels ISO 9241-307). Valid: six months from the purchase date.