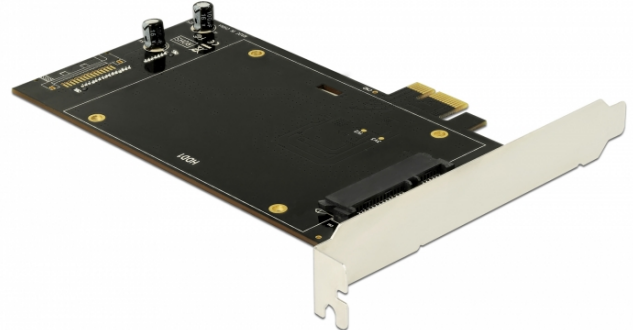


Delock PCI Express x1 Card for 2 x SATA HDD / SSD

Description

This PCI Express card by Delock expands the PC by two SATA 22 pin ports. Up to two 2.5" SSD / HDD can be connected to this card. The SSDs / HDDs are mounted on both sides of the PCIe card.



Note

- By using both SATA ports the adjacent PCI slot is occupied.

Specification

- Connectors:
 - internal:
 - 1 x PCI Express x1, V2.0
 - 2 x SATA 22 pin receptacle
- Chipset: Asmedia ASM1061
- Suitable for 2.5" SATA HDD / SSD:
 - SATA HDD / SSD up to 6 Gb/s
 - supports 5 V HDD / SSD
- Bootable
- Supports Native Command Queuing (NCQ)
- Dimensions (LxWxH): ca. 150 x 120 x 20 mm

System requirements

- Linux Kernel 4.9.4 or above
- Windows 7/7-64/8.1/8.1-64/10/10-64
- PC with one free PCI Express slot

Package content

- PCI Express card
- 8 x fixing screw
- 2 x HDD / SSD mounting bracket
- Driver CD
- User manual

Item no. 90349

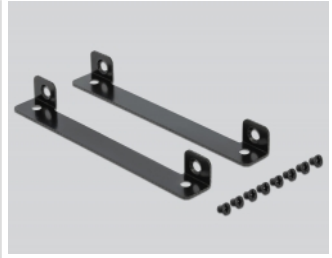
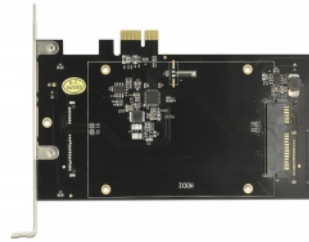
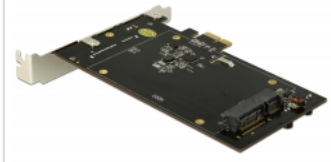
EAN: 4043619903498

Country of origin: China

Package: Retail Box



Images



General	
Form factor:	Standard
Function:	Plug & Play bootable
Suitable for data medium:	SSD or HDD
Supported operating system:	Windows 7 32-bit Windows 7 64-bit Windows 8.1 32-bit Windows 8.1 64-bit Windows 10 32-bit Windows 10 64-bit Linux Kernel 4.9.4 or above
Slot:	PCIe
Interface	
Internal:	1 x PCI Express x1, V2.0 2 x SATA 22 Pin Buchse
Technical characteristics	
Data transfer rate:	SATA up to 6 Gb/s